



FOR LEASE

| | |
|----------------|-------------------------------|
| Available SF: | Suite 9226-B, 1,145 SF |
| Lease Rate: | \$17.00 SF/yr |
| Lease Type: | Full Service, Less Janitorial |
| Building Size: | 11,250 SF |
| Year Built: | 2006 |
| Zoning: | CS |

PROPERTY OVERVIEW

FOR LEASE - Garden Office Building with private entrances and front door parking. Exterior building signage and monument street signage available.

LOCATION OVERVIEW

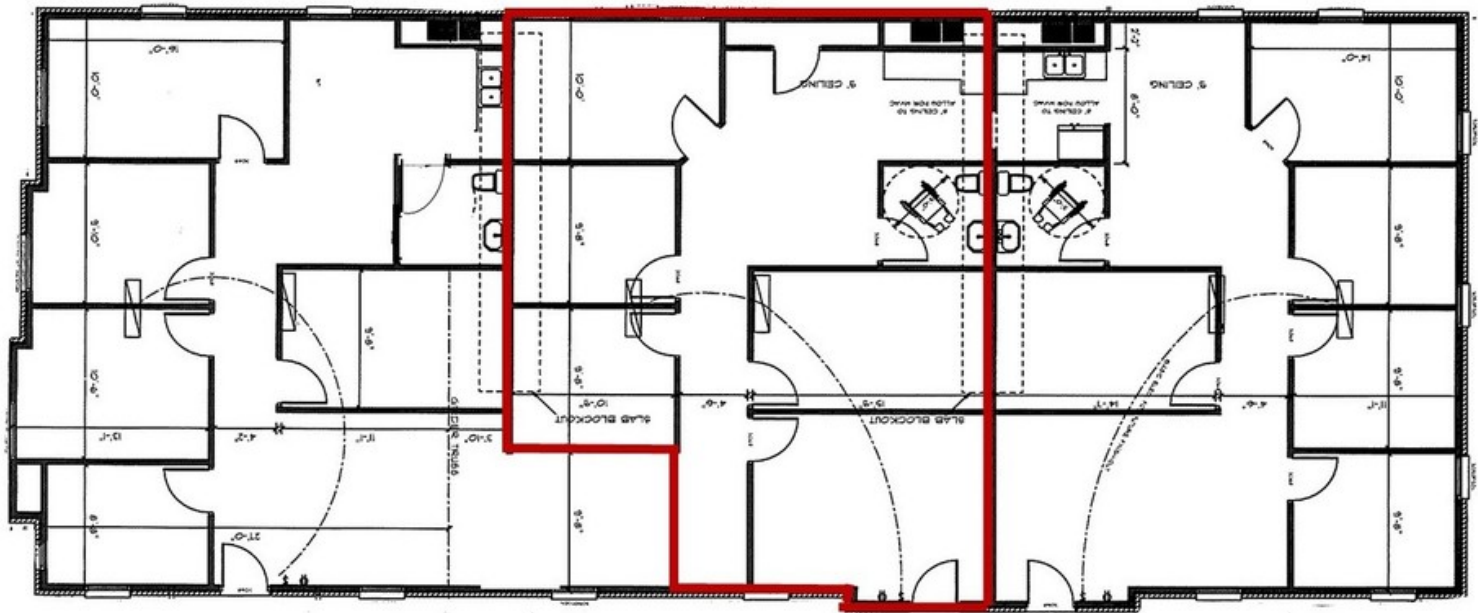
The property is located across from South Lakes Golf Course in Jenks, with easy access to Highway 75, and Jones Riverside Airport.

TANDA FRANCIS
918.394.1000
tfrancis@pricedwards.com
pricedwards.com

South Lakes Office Park

9222-24-26 South Elwood, Jenks, OK 74037

Suite 9226-B
1,145 SF



TANDA FRANCIS
918.394.1000
tfrancis@pricedwards.com
pricedwards.com